

# West Hunsbury FOCUS



[www.southnorthantslibdems.org.uk](http://www.southnorthantslibdems.org.uk)

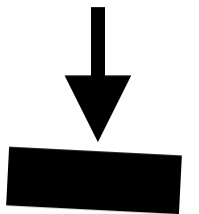
Edited by Jill Hope. Paid for and delivered by volunteers

Borough Councillors in  
Northampton

Lib  
Dem  
23

Con  
16

Lab  
Just 5



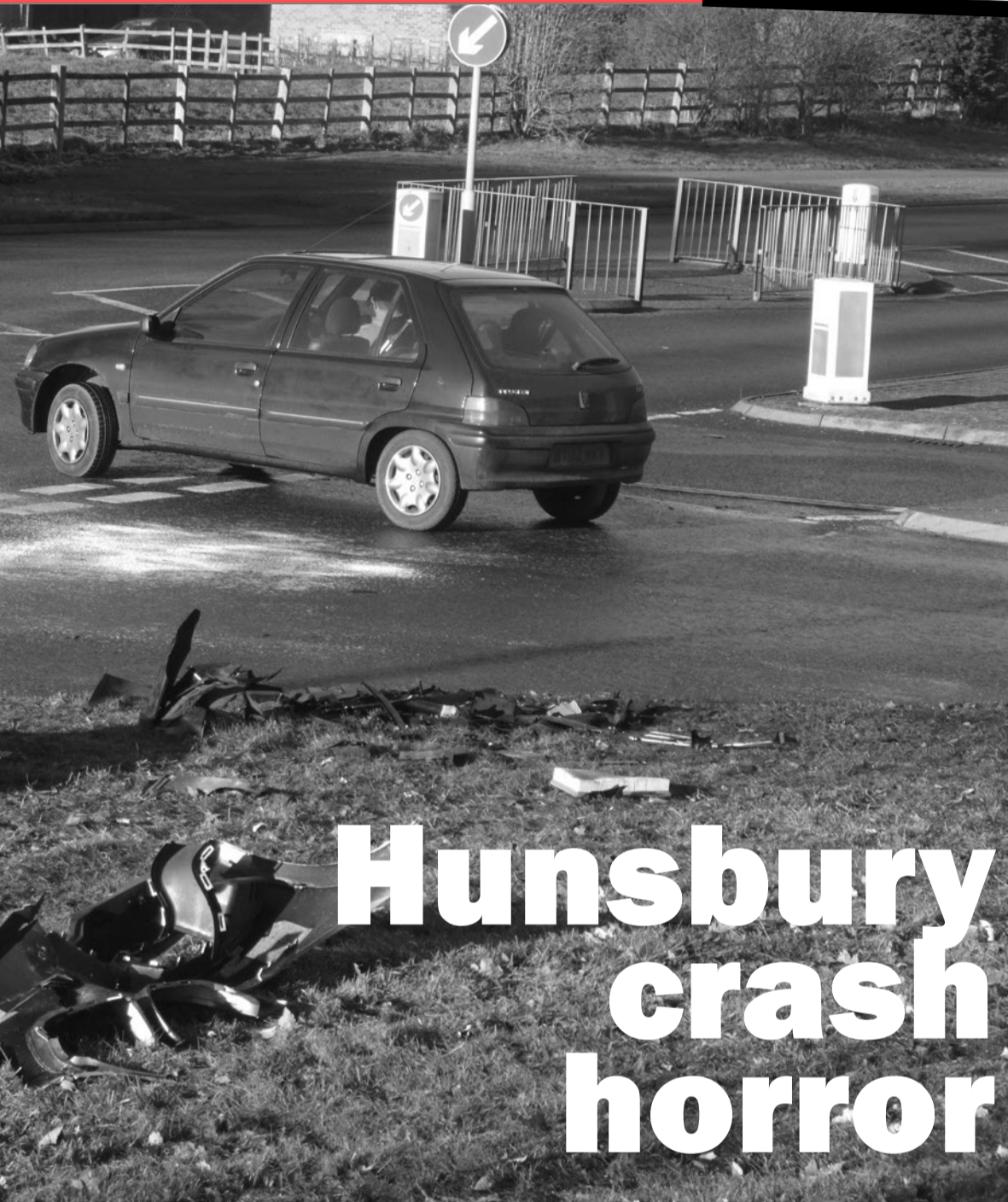
## JILL HOPE COMMENTS:

*"WHEN I was Borough Councillor for West Hunsbury I campaigned long and hard for the roundabout that was finally built at the junction of Ladybridge Drive and Towcester Road, because of repeated accidents there. Now those crashes are being*

*repeated at the junction of Rowtree Road and Towcester Road.*

*Early December saw a serious multi-vehicle pile-up.*

*I will be asking the same questions as I did before - why are these crashes happening and what is being done about it?"*



## Hunsbury crash horror

## HIDDEN DANGER IN LOCAL LAKE?

THE new West Lake estate in West Hunsbury is a lovely place for families, close to local parkland. It's ideal for walking dogs and feeding the ducks.

HOWEVER some residents have questioned the safety of the lake itself, since it has been suggested that the lake has several feet of muddy sludge at the bottom, as it hasn't been dredged for several years.

EVEN strong swimmers could find it difficult if they had to go in to pull out a dog, or a child who had fallen in.

YOUR FOCUS team will be talking to the Environment Agency about this problem.

## Looking forward to a dazzling display in Spring



FRIENDS of Hunsbury Hill Park, Councillor Trini Crake, Jill Hope from the Lib Dem FOCUS team, and Northampton Borough Council staff planted over 1,000 bulbs in Hunsbury Hill Park recently.

IT was a bitterly cold day and the ground was hard but not completely frozen. Luckily the Council staff had come prepared with an oil-powered earth borer to create the holes very fast.

SHOULD be a magnificent display of crocus, daffodils and narcissi next Spring.

THE following week many of the same people attended a litter pick in the park.

## Cafe at Hunsbury Hill Park - progress report

LOCAL residents and your Lib Dem Borough Councillors all campaigned against the planning application to turn the toilet block in the car park of Hunsbury Hill Park into a cafe. HOWEVER, the Planning Committee, made up of representatives from all parties, could find no reason to refuse this application, so it was agreed despite the opposition.

THE building has been an ugly wreck for years. The new owner has now repaired the damaged roof and has also made the property weatherproof for the winter months.

WE understand that the cafe is due to be opened in April 2011.

**ACTION ALL YEAR ROUND - NOT JUST AT ELECTION TIMES!**